

# TUGGERAH LAKES PRIVATE HOSPITAL LANDSCAPE DA DOCUMENTATION

## Sheet No.

LP-001  
LP-002  
LP-003  
LP-004

## Sheet Name

COVER SHEET  
LANDSCAPE PLAN  
ELEVATIONS  
PLANTING DETAIL AND SCHEDULE

## Revision

C  
E  
D  
A

## Date

2/8/17  
2/8/17  
18/7/17  
10/4/17



LOCATION PLAN  
NTS (SIX Maps, 2017)



Suite 11, 88 Fern Street | PO Box 111  
Kington NSW 2286  
Phone (02) 4980 3000 fax (02) 4980 3001  
garden@moir.com.au  
www.moir.com.au



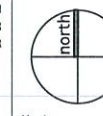
NOTES:  
1. DO NOT SCALE OFF DRAWINGS. FOLLOW WRITTEN DIMENSIONS.  
IF IN DOUBT OBTAIN WRITTEN ADVICE FROM THE SUPERINTENDENT.  
2. VERIFY ALL DIMENSIONS ON SITE.  
3. TO BE READ IN CONJUNCTION WITH THE SPECIFICATION.  
4. READ IN CONJUNCTION WITH ALL ARCHITECTURAL, CIVIL, STRUCTURAL, HYDRAULIC, MECHANICAL AND ELECTRICAL ENGINEER'S DRAWINGS AND SPECIFICATIONS.  
5. CONFIRM LOCATION OF ALL SERVICES ON SITE PRIOR TO EXCAVATION.

Architect:  
HEALTH PROJECT INTERNATIONAL

Engineer:

No.	Date	REVISION
A	10/4/17	FOR SUBMISSION
B	18/7/17	FOR RE-SUBMISSION
C	2/8/17	FOR RESUBMISSION

By  
CN  
HR  
HR



Status  
**FOR SUBMISSION**  
Tuggerah Lake Private Hospital  
645-647 Pacific Highway, Kanwal  
Health Care Australia

## COVER SHEET

SCALE: NTS

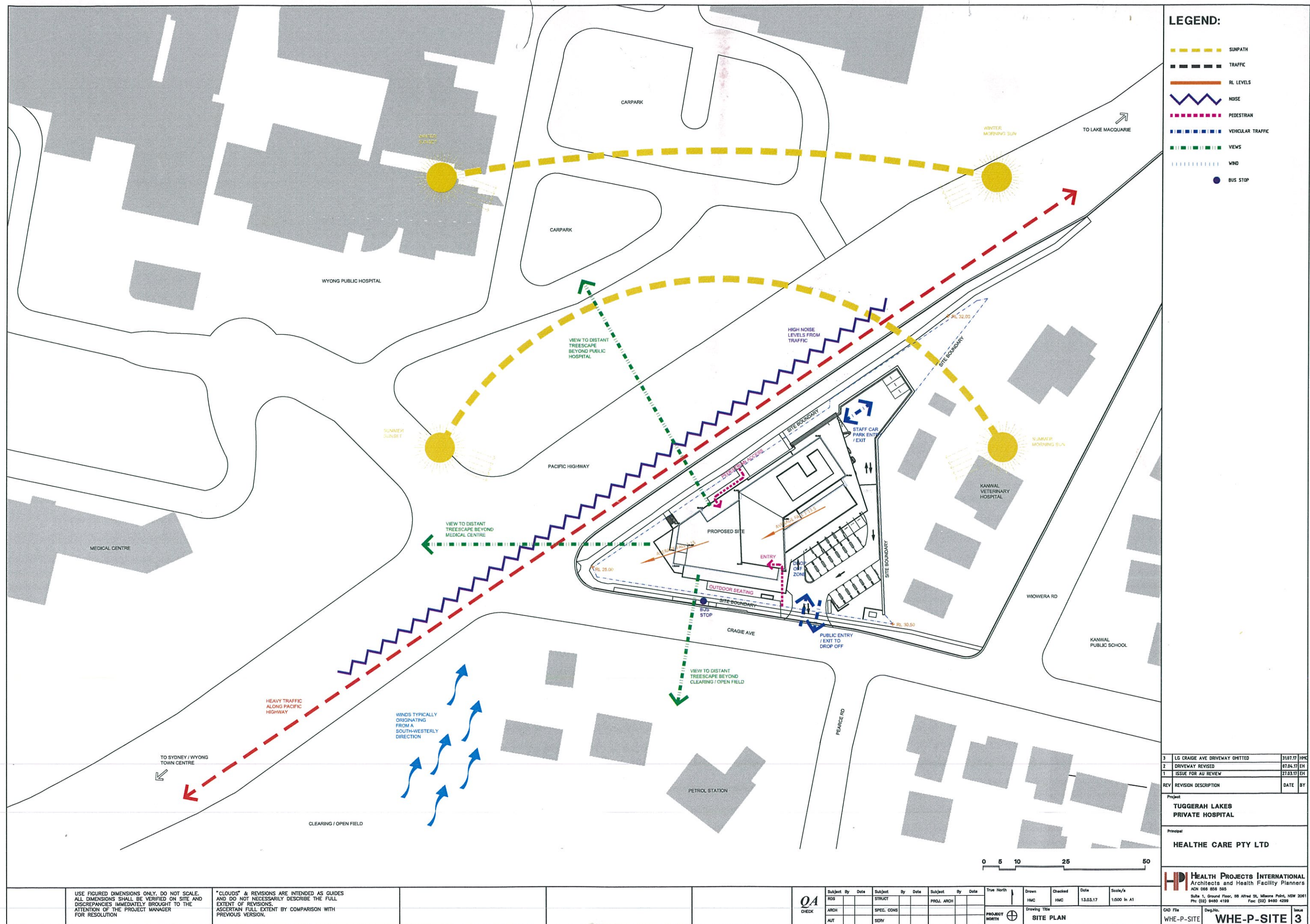
ORIGINAL DRAWING AT A1:

Drawn By: CN  
Checked By: HR

Project No.  
**1419**

Drawing No. Rev  
LP-001 C





3	LG CRAIGIE AVE DRIVEWAY OMITTED	31.07.17	HMC
2	DRIVEWAY REVISED	07.04.17	EH
1	ISSUE FOR AU REVIEW	27.03.17	EH
REV	REVISION DESCRIPTION	DATE	BY

Project	TUGGERAH LAKES PRIVATE HOSPITAL
Principal	HEALTH CARE PTY LTD

**HP HEALTH PROJECTS INTERNATIONAL**  
Architects and Health Facility Planners  
ACN 066 856 585  
Suite 1, Ground Floor, 88 Alfred St, Milsons Point, NSW 2061  
Ph: (02) 9480 4199 Fax: (02) 9480 4299

CAD File	Dwg.No.	Issue
WHE-P-SITE	<b>WHE-P-SITE</b>	<b>3</b>





19	PUBLIC ART LOCATION SHOWN	24.07.17	HMC
18	NOTES REVISED, COLOUR REVISED	12.07.17	HMC
17	EGRESS DRIVEWAY TO CRAIGIE AVE FROM LG QMT	11.07.17	HMC
	QSD TANK ROTATED AS PER ENG COMMENTS		
	SINGLE LANE RAMP TO SERVE TWO WAY TRAFFIC		
	AS PER ENG ADVICE		
	ADDITIONAL RL IN CARPARK SHOWN		
16	DEPARTMENT LAYOUTS REVISED AS PER USER GRP	29.06.17	HMC
	COLUMNS REVISED FOR ENG TO REVIEW		
15	DETAILS ADDED TO FLOOR PLAN	20.06.17	HS
	FOR SD WORKSHOP		
14	COLUMN LOCATIONS REVISED, SECTION REFERENCE	18.05.17	HS
	REVISED		
13	BASEMENT CARPARK EXTENDED, LIFT CORE	05.05.17	PJ
	ROTATED		
12	EXTENT OF AWNING REVISED	06.04.17	EH
	CRAIGIE AVE DRIVEWAY REVISED		
	NEW RAMP DOWN TO LG STAFF CARPARK		
11	ISSUE FOR AU REVIEW	27.03.17	EH
10	ISSUE FOR CO-ORDINATION	22.03.17	EH
REV	REVISION DESCRIPTION	DATE	BY

Project

TUGGERAH LAKES  
PRIVATE HOSPITAL

Principal

HEALTH CARE PTY LTD

HEALTH PROJECTS INTERNATIONAL

Architects and Health Facility Planners

ACN 068 856 585

Suite 1, Ground Floor, 68 Milsons Point, NSW 2061

Pty (02) 9460 4199 Fax: (02) 9460 4299

CAD File

WHE-P-G

Dwg No.

WHE-P-G

Issue

19

QA  
CHECK

Subj	By	Date	Subj	By	Date	Subj	By	Date
RDS			STRUCT			PROJL		
ARCH			SPEC			CONTS		
AUT			SERV					

True North

Drawn

HMC

Checked

HMC

Date

13.03.17

Scale/s

1:200 In A1

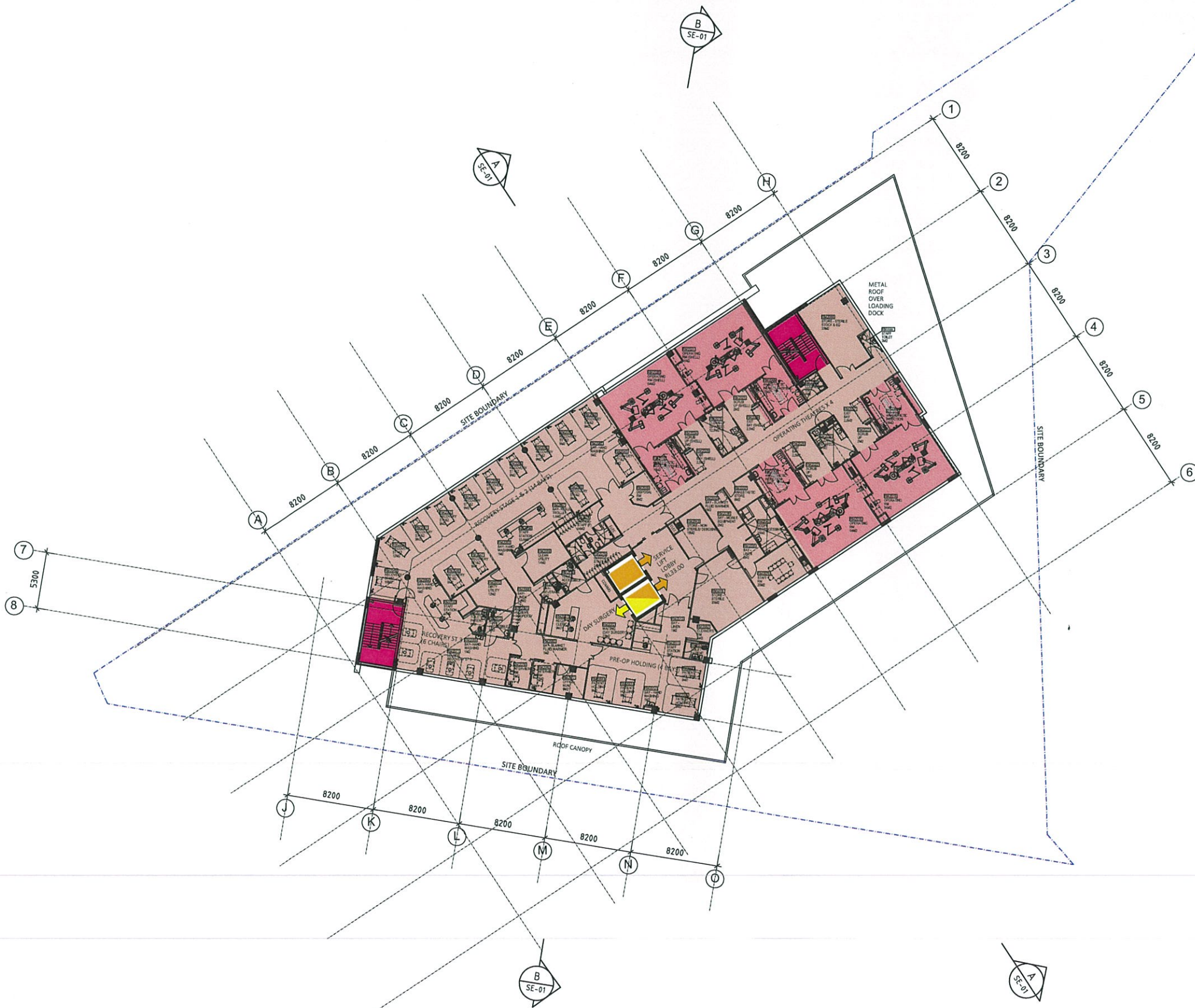
Drawing Title

GROUND - FLOOR PLAN

USE FIGURED DIMENSIONS ONLY. DO NOT SCALE.  
ALL DIMENSIONS SHALL BE VERIFIED ON SITE AND  
DISCREPANCIES IMMEDIATELY BROUGHT TO THE  
ATTENTION OF THE PROJECT MANAGER  
FOR RESOLUTION

\*CLOUDS\* & REVISIONS ARE INTENDED AS GUIDES  
AND DO NOT NECESSARILY DESCRIBE THE FULL  
EXTENT OF REVISIONS.  
ASCERTAIN FULL EXTENT BY COMPARISON WITH  
PREVIOUS VERSION.





16	COLOUR SHOWN FOR DA SUBMISSION	31.07.17	HMC
15	DEPARTMENT LAYOUTS REVISED AS PER USER GRP	29.06.17	HMC
	COLUMNS REVISED FOR ENG TO REVIEW		
14	DETAILS ADDED TO FLOOR PLAN	20.06.17	HS
	FOR SD WORKSHOP		
13	COLUMN LOCATIONS REVISED, SECTION REFERENCE	18.05.17	HS
	REVISED		
12	LIFT CORE ROTATED, LAYOUT REVISED TO SUIT	05.05.17	PJ
11	EXTENT OF AWNING REVISED	04.04.17	EH
10	ISSUE FOR AU REVIEW	27.03.17	EH
9	ISSUE FOR CO-ORDINATION	22.03.17	EH
REV	REVISION DESCRIPTION	DATE	BY

Project  
**TUGGERAH LAKES  
PRIVATE HOSPITAL**

Principal  
**HEALTH CARE PTY LTD**

**HPI HEALTH PROJECTS INTERNATIONAL**  
Architects and Health Facility Planners  
ACN 068 858 565  
Suite 1, Ground Floor, 68 Alfred St, Murrumbidgee, NSW 2581  
Ph: (02) 9440 4199 Fax: (02) 9440 4299

CD File  
WHE-P-1

Dwg.No.  
**WHE-P-1**

Issue  
**16**

USE FIGURED DIMENSIONS ONLY. DO NOT SCALE.  
ALL DIMENSIONS SHALL BE VERIFIED ON SITE AND  
DISCREPANCIES IMMEDIATELY BROUGHT TO THE  
ATTENTION OF THE PROJECT MANAGER  
FOR RESOLUTION

"CLOUDS" & REVISIONS ARE INTENDED AS GUIDES  
AND DO NOT NECESSARILY DESCRIBE THE FULL  
EXTENT OF REVISIONS.  
ASCERTAIN FULL EXTENT BY COMPARISON WITH  
PREVIOUS VERSION.

**QA**  
CHECK

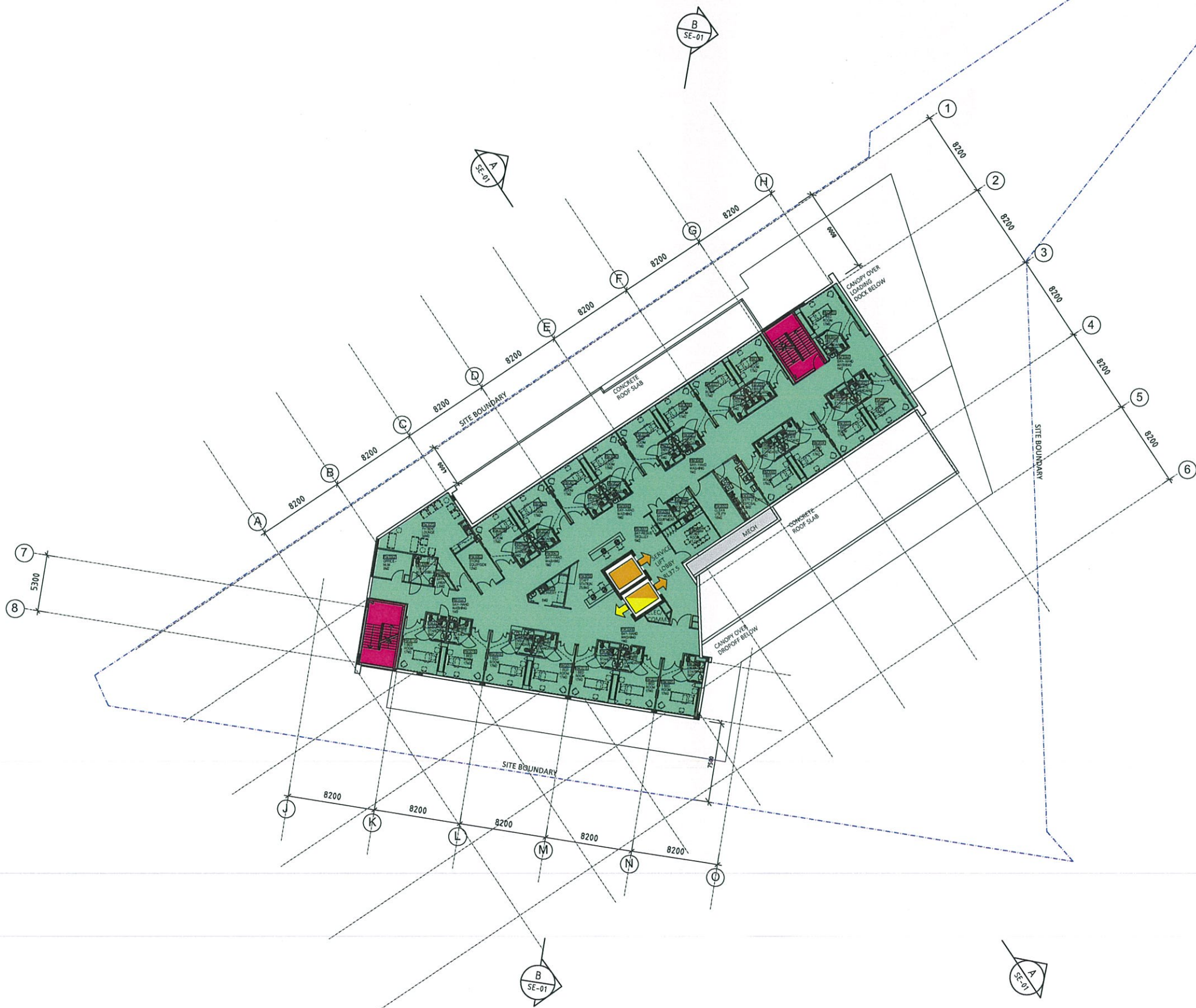
Subject	By	Date	Subject	By	Date	Subject	By	Date
RDS			STRUCT			PROJ. ARCH		
ARCH			SPEC. CONS					
AUT			SERV					

Drawn	Checked	Date	Scale/s
HMC	HMC	10.03.17	1:200 In A1

Drawing Title  
**LEVEL 1 - FLOOR PLAN**

PROJECT NORTH





16	COLOUR SHOWN FOR DA SUBMISSION	31.07.17	HMC
15	DEPARTMENT LAYOUTS REVISED AS PER USER GRP	29.06.17	HMC
	COLUMNS REVISED FOR ENG TO REVIEW		
14	DETAILS ADDED TO FLOOR PLAN	28.06.17	HS
	FOR SD WORKSHOP		
13	DA SUBMISSION PACKAGE, COLUMNS UPDATED,	16.05.17	HS
	SECTION REFERENCE UPDATED		
12	LIFT CORE ROTATED	05.05.17	PJ
11	EXTENT OF AWNING REVISED	06.04.17	EH
10	ISSUE FOR AU REVIEW	27.03.17	EH
9	ISSUE FOR CO-ORDINATION	22.03.17	EH
REV	REVISION DESCRIPTION	DATE	BY

Project  
**TUGGERAH LAKES  
PRIVATE HOSPITAL**

Principal  
**HEALTH CARE PTY LTD**

**HPI HEALTH PROJECTS INTERNATIONAL**  
Architects and Health Facility Planners  
ACN 065 856 505  
Suite 1, Ground Floor, 68 Alfred St, Murrumbidgee, NSW 2501  
Ph: (02) 9460 4199 Fax: (02) 9460 4299

CAD File  
WHE-P-2

Dwg No.  
**WHE-P-2**

Issue  
**16**

USE FIGURED DIMENSIONS ONLY. DO NOT SCALE.  
ALL DIMENSIONS SHALL BE VERIFIED ON SITE AND  
DISCREPANCIES IMMEDIATELY BROUGHT TO THE  
ATTENTION OF THE PROJECT MANAGER  
FOR RESOLUTION

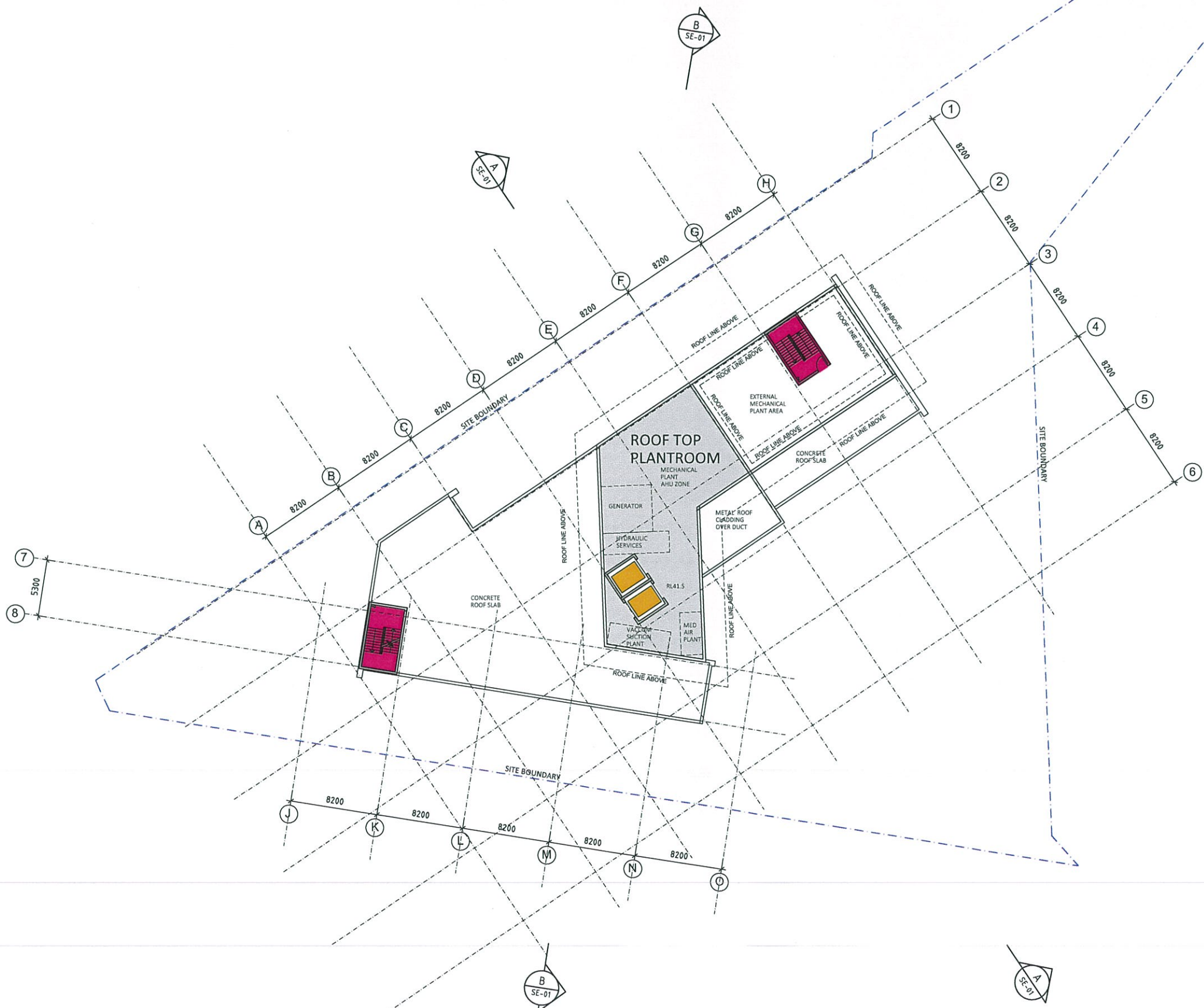
\*CLOUDS\* & REVISIONS ARE INTENDED AS GUIDES  
AND DO NOT NECESSARILY DESCRIBE THE FULL  
EXTENT OF REVISIONS.  
ASCERTAIN FULL EXTENT BY COMPARISON WITH  
PREVIOUS VERSION.

**QA**  
CHECK

Subject	By	Date	Subject	By	Date	Subject	By	Date
WDS			STRUCT			PROJ. ARCH		
ARCH			SPEC. CONS					
AUT			SERV					

True North	Drawn	Checked	Date	Scale/s
	HMC	HMC	13.03.17	1:200 in A1
PROJECT NORTH	Drawing Title			
	<b>LEVEL 2 - FLOOR PLAN</b>			





9	COLOUR SHOWN FOR DA SUBMISSION	31.07.17	HPM
8	DETAILS ADDED TO FLOOR PLAN	20.06.17	HS
7	FOR SD WORKSHOP		
7	SECTION REFERENCE UPDATED	16.05.17	HS
6	LIFT CORE ROTATED	05.05.17	PJ
5	EXTENT OF AWNING REVISED	06.04.17	EH
4	ISSUE FOR AU REVIEW	27.03.17	EH
3	ISSUE FOR CO-ORDINATION	22.03.17	EH
REV	REVISION DESCRIPTION	DATE	BY

Project  
**TUGGERAH LAKES  
PRIVATE HOSPITAL**

Principal  
**HEALTH CARE PTY LTD**

**HEALTH PROJECTS INTERNATIONAL**  
Architects and Health Facility Planners  
ACN 068 858 585  
Suite 1, Ground Floor, 88 Alfred St, Milsons Point, NSW 2061  
Ph: (02) 9480 4199 Fax: (02) 9480 4299

CAD File  
WHE-P-3

Dwg.No.  
**WHE-P-3**

Issue  
**9**

USE FIGURED DIMENSIONS ONLY. DO NOT SCALE.  
ALL DIMENSIONS SHALL BE VERIFIED ON SITE AND  
DISCREPANCIES IMMEDIATELY BROUGHT TO THE  
ATTENTION OF THE PROJECT MANAGER  
FOR RESOLUTION

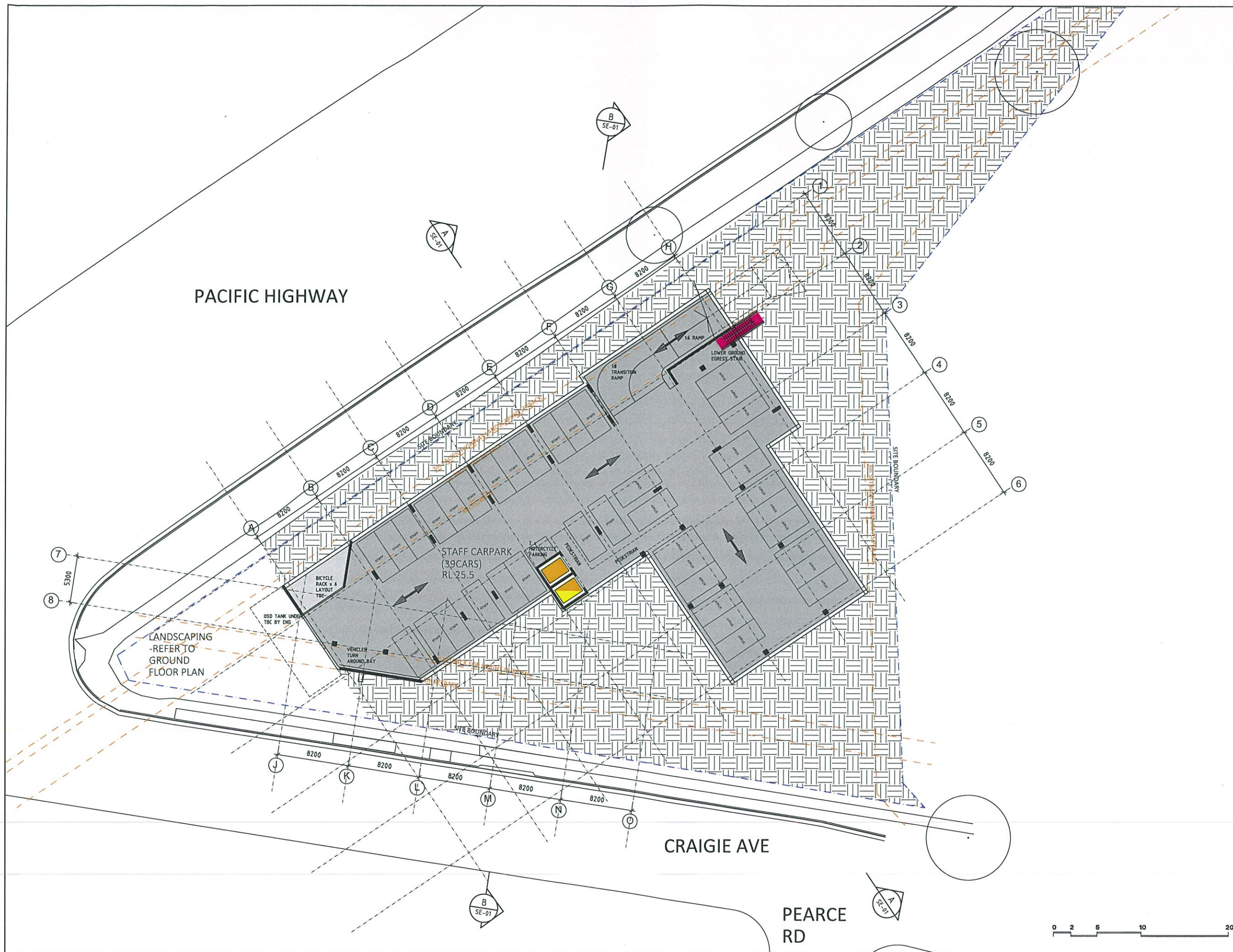
"CLOUDS" & REVISIONS ARE INTENDED AS GUIDES  
AND DO NOT NECESSARILY DESCRIBE THE FULL  
EXTENT OF REVISIONS.  
ASCERTAIN FULL EXTENT BY COMPARISON WITH  
PREVIOUS VERSION.

<b>QA</b> CHECK			Subject	By	Date	Subject	By	Date	Subject	By	Date	True North
RDS			STRUCT			PROJ. ARCH						
ARCH			SPEC. CONS									
AUT			SERV									

Drawn	Checked	Date	Scale/s
HMC	HMC	13.03.17	1:200 in A1
Drawing Title			
<b>LEVEL 3 - FLOOR PLAN</b>			








18	NOTES REVISED, COLOUR REVISED	12.07.17	HMC
17	EGRESS DRIVEWAY TO CRAIGIE AVE FROM LG GMIT	11.07.17	HMC
	OSD TANK ROTATED AS PER ENG COMMENTS		
	SINGLE LANE RAMP TO SERVE TWO WAY TRAFFIC		
	AS PER ENG ADVICE		
16	DEPARTMENT LAYOUTS REVISED AS PER USER GRP	29.06.17	HMC
	COLUMNS REVISED FOR ENG TO REVIEW		
15	DETAILS ADDED TO FLOOR PLAN	20.06.17	HS
	FOR SD WORKSHOP		
14	COLUMN LOCATIONS REVISED, SECTION REFERENCE	18.05.17	HS
	REVISED		
13	FLOOR FOOTPRINT EXTENDED, LIFT CORE ROTATED	05.05.17	PJ
	CARPARKING SPACES INCREASED TO 39		
12	CRAIGIE AVE DRIVEWAY REVISED	06.04.17	EH
	NEW RAMP DOWN TO LG STAFF CARPARK		
11	ISSUE FOR AU REVIEW	27.03.17	EH
10	ISSUE FOR CO-ORDINATION	22.03.17	EH
REV	REVISION DESCRIPTION	DATE	BY

Project  
**TUGGERAH LAKES  
PRIVATE HOSPITAL**

Principal  
**HEALTH CARE PTY LTD**

**HEALTH PROJECTS INTERNATIONAL**  
Architects and Health Facility Planners  
ACN 068 056 505  
Suite 1, Ground Floor, 88 Alfred St, Murrumbidgee, NSW 2501  
Ph: (02) 9460 4199 Fax: (02) 9460 4299

CAD File  
**WHE-P-LG**

Dwg No.  
**WHE-P-LG**

Issue  
**18**

USE FIGURED DIMENSIONS ONLY. DO NOT SCALE.  
ALL DIMENSIONS SHALL BE VERIFIED ON SITE AND  
DISCREPANCIES IMMEDIATELY BROUGHT TO THE  
ATTENTION OF THE PROJECT MANAGER  
FOR RESOLUTION

\*CLOUDS\* & REVISIONS ARE INTENDED AS GUIDES  
AND DO NOT NECESSARILY DESCRIBE THE FULL  
EXTENT OF REVISIONS.  
ASCERTAIN FULL EXTENT BY COMPARISON WITH  
PREVIOUS VERSION.

<div>QA</div> <div>CHECK</div>	Subject		By	Date	Subject		By	Date	Subject		By	Date	<div>True North</div>	<div>Drawn</div> <div>HMC</div>	<div>Checked</div> <div>HMC</div>	<div>Date</div> <div>13.03.17</div>	<div>Scale/s</div> <div>1:200 in A1</div>
	RDS				STRUCT				PROJL ARCH								
	ARCH				SPEC. CONS												
	AUT				SERV												

PROJECT NORTH

Drawing Title

LOWER GROUND 1 - FLOOR PLAN









CAD File	Dwg. No.	Issue
WHE-E-OA	WHE-E-OA-1	4





4	ELEVATION REVISED TO MATCH PLAN	06.04.10	W
3	ISSUED FOR AIR REVIEW	21.03.10	W
2	ISSUED FOR COORDINATION	22.03.10	W
1	ISSUED FOR PRE-LODGEEMENT MEETING	08.03.10	W
REV	REVISION DESCRIPTION	DATE	B

Project

TUGGERAH LAKES  
PRIVATE HOSPITAL

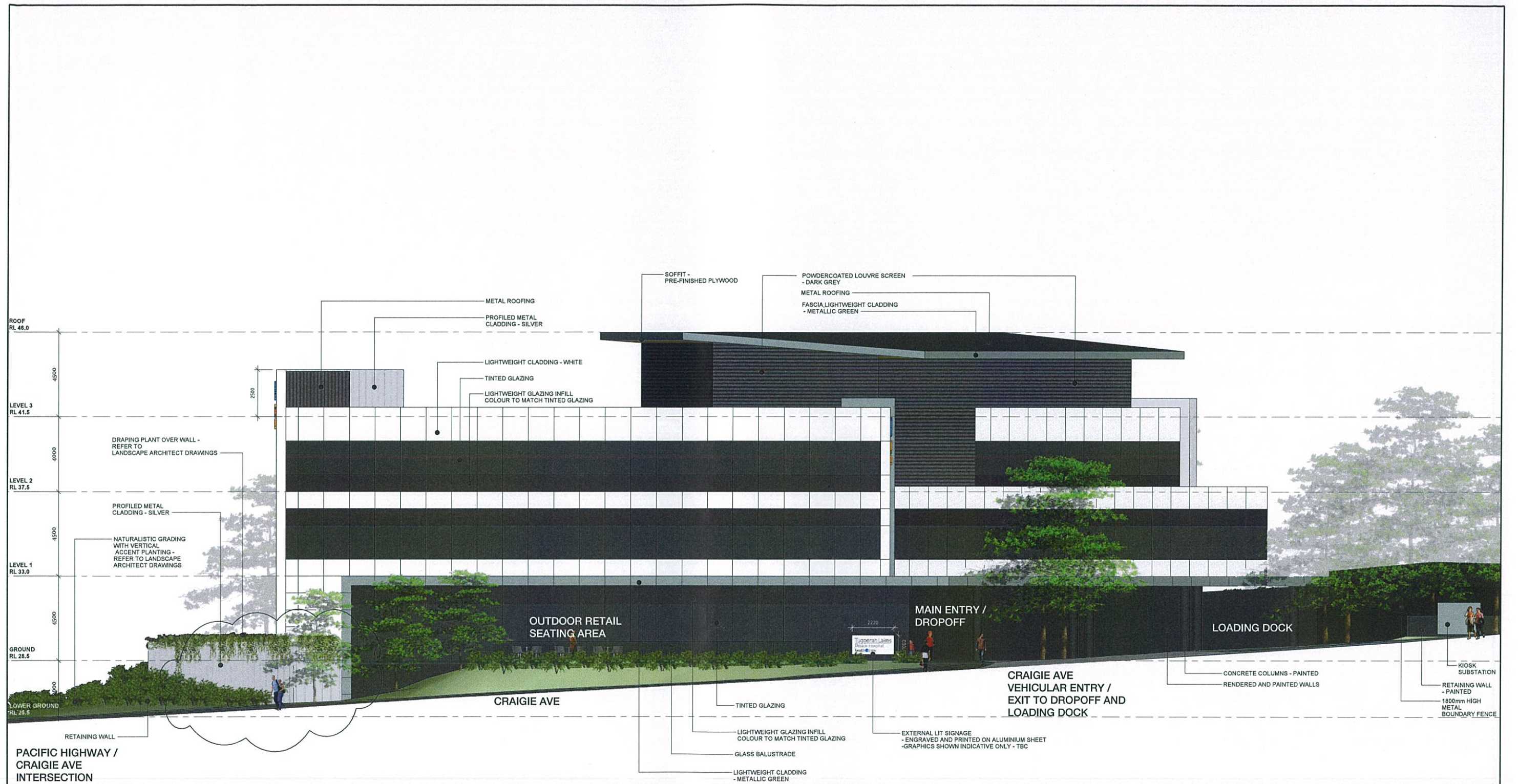
Principal

HEALTH CARE PTY LTD

**HP** HEALTH PROJECTS INTERNATIONAL  
Architects and Health Facility Planners  
A/CN 061 854 505  
Suite 1, Grand Floor, 48 Alfred St Milsons Point, NSW 2061  
Ph: 021 9440 4199 Fax: 0211 9440 4299

CAD File	Dwg No	Issued
WHE-E-1	WHE-E-1	





1. ELEVATION - CRAIGIE AVE

5	LD DRIVEWAY TO CRAIGIE AVE OMITTED	16.03.17	HMC
4	ELEVATION REVISED TO MATCH PLAN	06.04.17	HMC
3	ISSUED FOR AU REVIEW	27.03.17	HMC
2	ISSUED FOR COORDINATION	22.03.17	HMC
1	ISSUED FOR PRE-LODGE MEETING	08.03.17	HMC
REV	REVISION DESCRIPTION	DATE	BY
Project			
TUGGERAH LAKES PRIVATE HOSPITAL			
Principal			
HEALTH CARE PTY LTD			
HPI HEALTH PROJECTS INTERNATIONAL Architects and Health Facility Planners ACN 066 856 595 Suite 1, Ground Floor, 68 Alfred St Milsom Point, NSW 2801 Ph: (02) 9460 4999 Fax: (02) 9460 4299			
CAD File		Dwg No	Issue
WHE-E-2		WHE-E-2	5

USE FIGURED DIMENSIONS ONLY. DO NOT SCALE. ALL DIMENSIONS SHALL BE VERIFIED ON SITE AND DISCREPANCIES IMMEDIATELY BROUGHT TO THE ATTENTION OF THE PROJECT MANAGER FOR RESOLUTION.		"CLOUDS" & REVISIONS ARE INTENDED AS GUIDES AND DO NOT NECESSARILY DESCRIBE THE FULL EXTENT OF REVISIONS. ASCERTAIN FULL EXTENT BY COMPARISON WITH PREVIOUS VERSION.		QA CHECK		Subject By Date PDS [ ] [ ] [ ] ARCH [ ] [ ] [ ] AUT [ ] [ ] [ ]		Subject By Date STRUCT [ ] [ ] [ ] SPEC CONS [ ] [ ] [ ] SERV [ ] [ ] [ ]		Subject By Date PROJ ARCH [ ] [ ] [ ]		True North		Drawn EH	Checked HMC	Date 15.03.17	Scale/s 1:100 in A1	Drawing Title ELEVATION - CRAIGIE AVE	
---	--	--	--	-------------	--	---	--	--	--	--	--	------------	--	-------------	----------------	------------------	------------------------	--	--

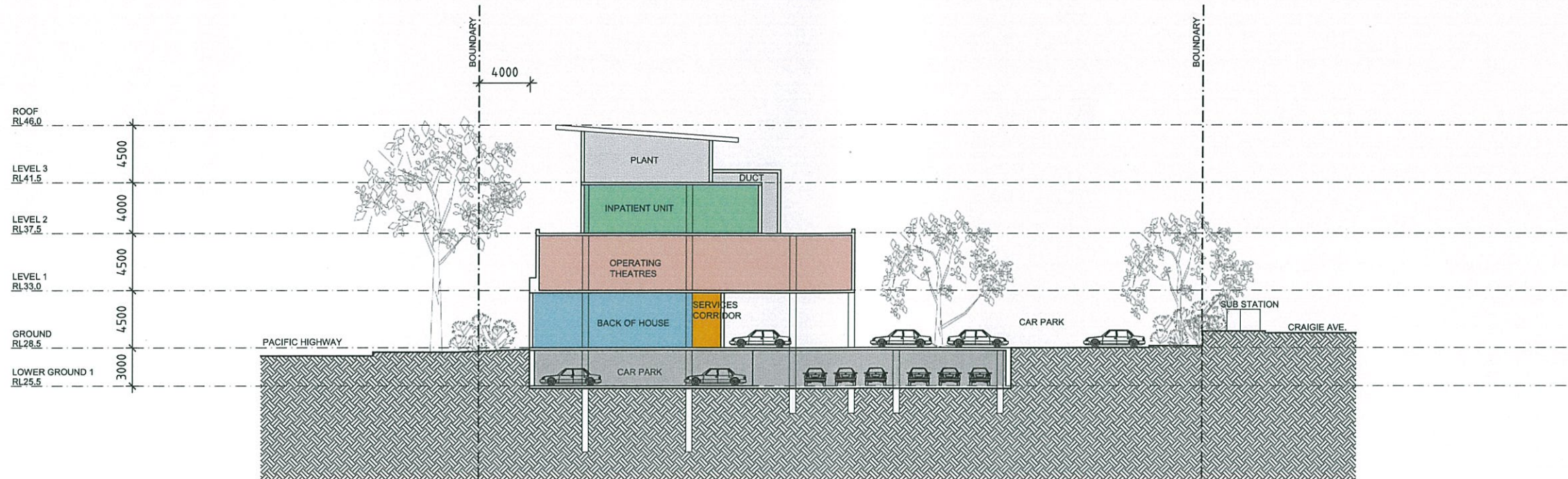




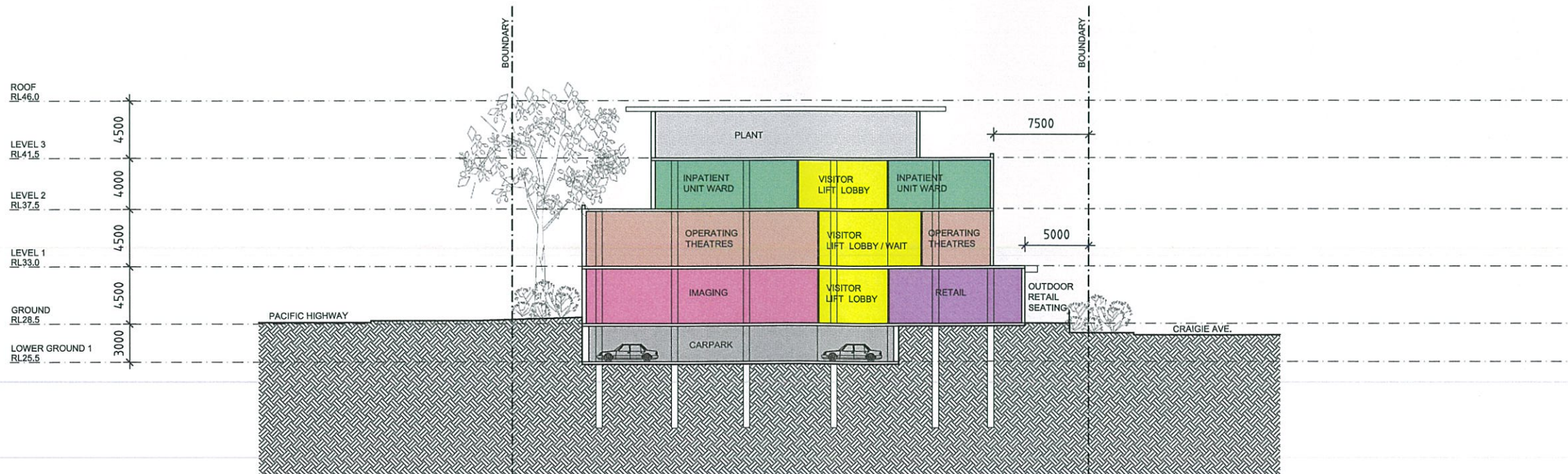
	<b>HEALTH PROJECTS INTERNATIONAL</b> Architects and Health Facility Planners ACN 066 856 595 Suite 1, Ground Floor, 68 Alfred St Milsans Point, NSW 2061 Ph. (02) 9460 4199		Fax: (02) 9460 4299
	CAD File <b>WHE-E-3</b>	Bwg. No. <b>WHE-E-3</b>	

[illegible]





SECTION A



SECTION B



3	BASEMENT CARPARK EXTENDED	25.05.17	PJ
2	ISSUE FOR AU REVIEW	27.03.17	EH
1	ISSUE FOR REVIEW	28.03.17	EH
REV	REVISION DESCRIPTION	DATE	BY

Project  
**TUGGERAH LAKES  
PRIVATE HOSPITAL**

Principal  
**HEALTH CARE PTY LTD**

**HP HEALTH PROJECTS INTERNATIONAL**  
Architects and Health Facility Planners  
ACN 088 856 585  
Suite 1, Ground Floor, 88 Alfred St, Murrumbidgee, NSW 2501  
Ph: (02) 9460 4199 Fax: (02) 9460 4299

CAD File  
WHE-SE-1

Dwg No.  
**WHE-SE-1**

Issue  
**3**

USE FIGURED DIMENSIONS ONLY. DO NOT SCALE.  
ALL DIMENSIONS SHALL BE VERIFIED ON SITE AND  
DISCREPANCIES IMMEDIATELY BROUGHT TO THE  
ATTENTION OF THE PROJECT MANAGER  
FOR RESOLUTION

\*CLOUDS\* & REVISIONS ARE INTENDED AS GUIDES  
AND DO NOT NECESSARILY DESCRIBE THE FULL  
EXTENT OF REVISIONS.  
ASCERTAIN FULL EXTENT BY COMPARISON WITH  
PREVIOUS VERSION.

**QA**  
CHECK

Subject	By	Date	Subject	By	Date	Subject	By	Date
RDS			STRUCT			PROJ. ARCH		
ARCH			SPEC. COHS					
AUT			SERV					

True North  
PROJECT NORTH

Drawn  
HMC

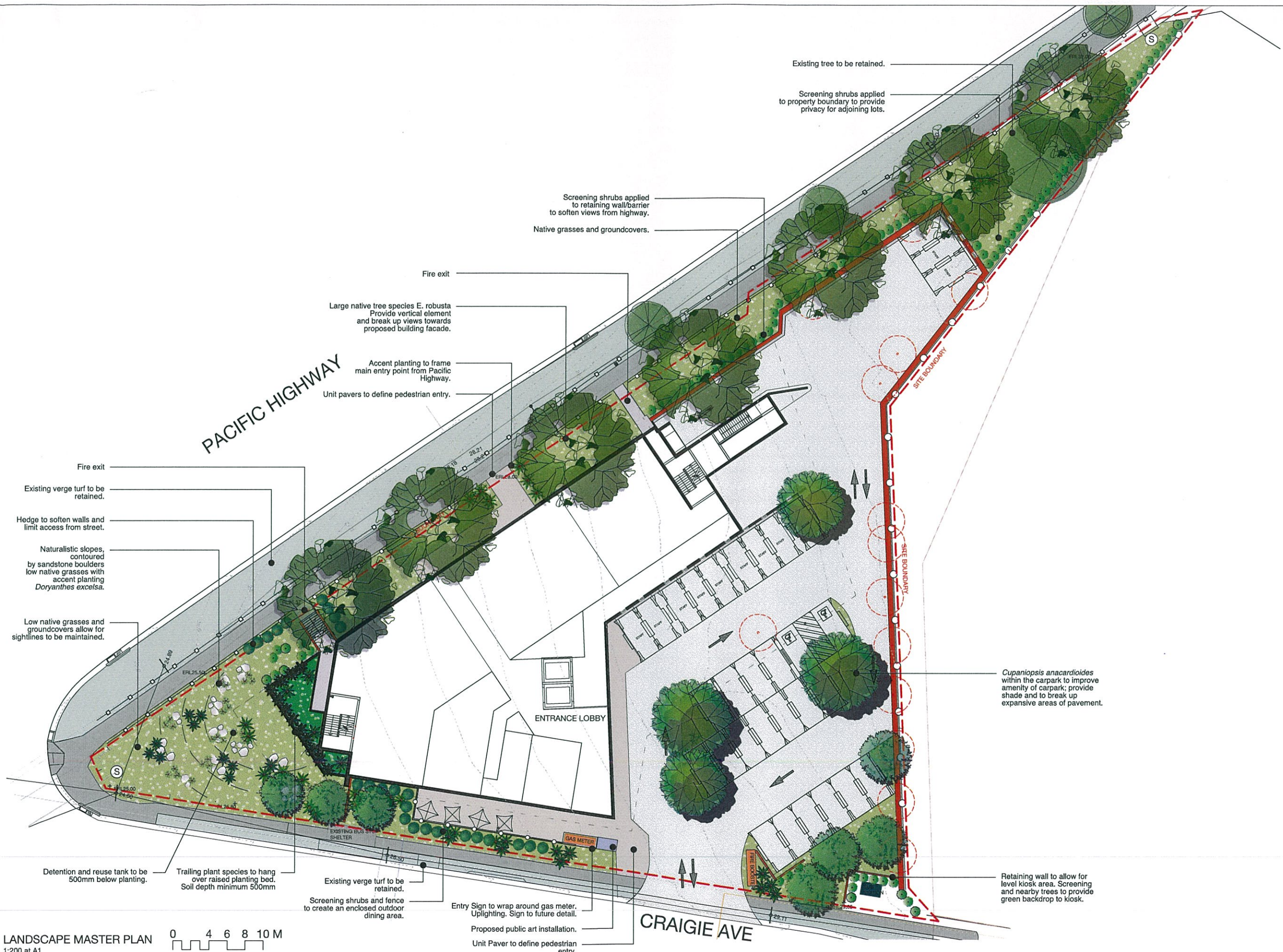
Checked  
HMC

Date  
08.03.17

Scale/s  
1:200 In A1

Drawing Title  
**SECTIONS**





**LEGEND**

--- EXTENT OF WORK

23.50 SPOT LEVEL

POWER LINES

EXISTING HANDRAIL

EXISTING TREE RETAINED

EXISTING TREE REMOVED

CARPARK

UNIT PAVERS

CONCRETE PATH

RETAINING WALL

PROPOSED FENCING

SANDSTONE ROCK (500-600MM DIA)

**TREES**

- Eucalyptus robusta*
- Melaleuca quinquenervia*
- Cupaniopsis anacardioides*

**VEGETATION**

- Low Native Grasses & Shrubs
- Low Groundcovers & Grasses
- Casuarina glauca* 'Cousin It'
- Doryanthes excelsa*  
*Correa alba*
- Syzygium resilience*  
*Syzygium cascade*

LANDSCAPE MASTER PLAN  
1:200 at A1

0 4 6 8 10 M

 moir landscape architecture

Studio 1, 88 Fern Street | PO Box 111  
Binglong NSW 2296  
Phone 02 4960 3000 - 1800 4960 3000  
admin@moir.com.au  
www.moir.com.au



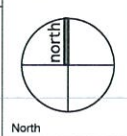
**NOTES:**

1. DO NOT SCALE OFF DRAWINGS. FOLLOW WRITTEN DIMENSIONS. IF IN DOUBT OBTAIN WRITTEN ADVICE FROM THE SUPERINTENDENT.
2. VERIFY ALL DIMENSIONS ON SITE.
3. TO BE READ IN CONJUNCTION WITH THE SPECIFICATION.
4. READ IN CONJUNCTION WITH ALL ARCHITECTURAL, CIVIL, STRUCTURAL, HYDRAULIC, MECHANICAL AND ELECTRICAL ENGINEER'S DRAWINGS AND SPECIFICATIONS.
5. CONFIRM LOCATION OF ALL SERVICES ON SITE PRIOR TO EXCAVATION.

Architect:  
**HEALTH PROJECTS INTERNATIONAL**

Engineer:

No.	Date	REVISION	By
DFT	7/3/17	FOR REVIEW	CN
A	7/3/17	SUBMISSION FOR PRE DA	CN
B	4/4/17	FOR REVIEW	HR
C	10/4/17	FOR SUBMISSION	CN
D	18/7/17	FOR RE-SUBMISSION	HR
E	2/8/17	FOR RESUBMISSION	HR



Status  
**FOR SUBMISSION**  
Tuggerah Lake Private Hospital  
645-647 Pacific Highway, Kanwal  
Health Care Australia

**LANDSCAPE PLAN**

SCALE: 1:200

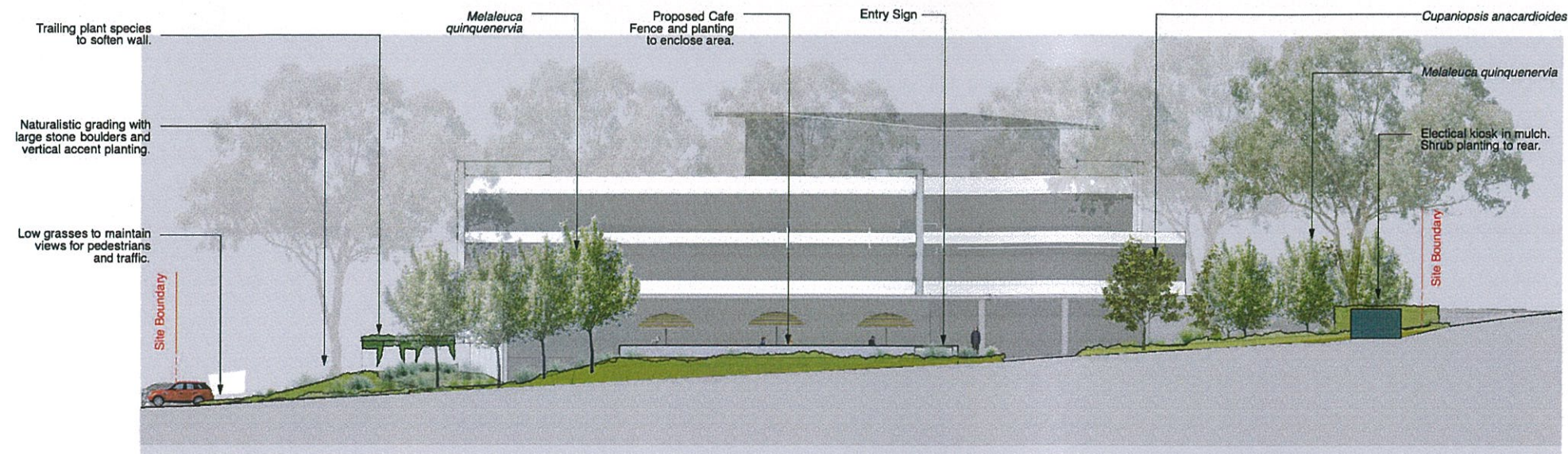
ORIGINAL DRAWING AT A1

Drawn By: CN  
Checked By: HR

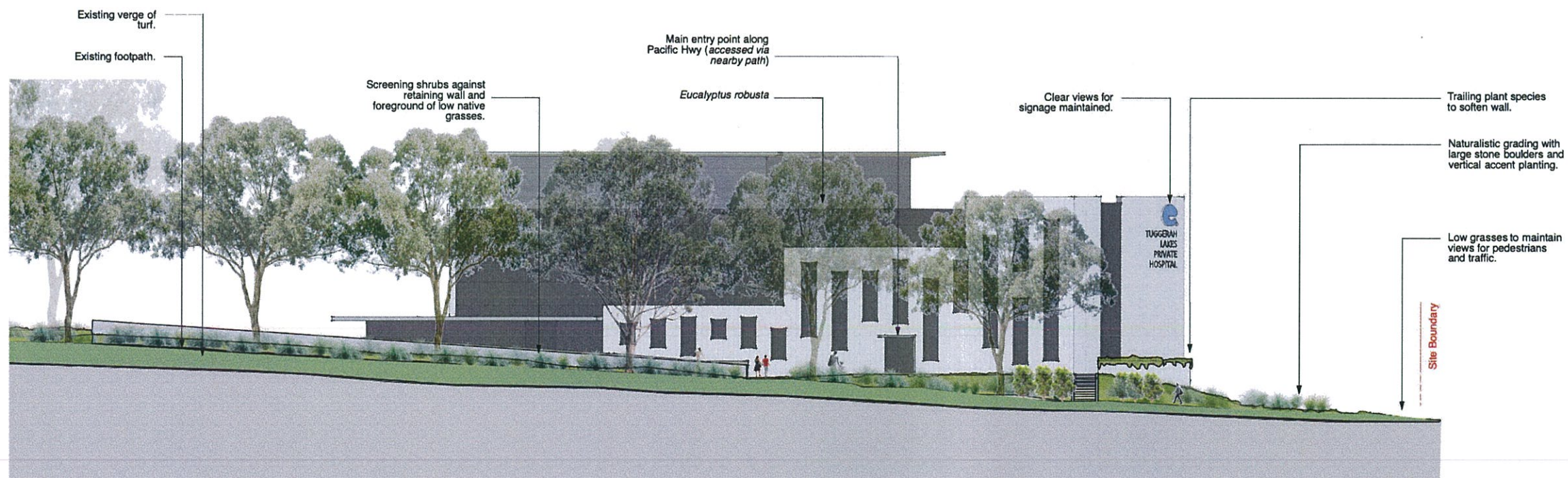
Project No.  
**1419**

Drawing No. Rev  
**LP-002 E**





ELEVATION SOUTH (ALONG CRAIGE AVE)  
1:200 at A1



ELEVATION NORTH (ALONG PACIFIC HWY)  
1:200 at A1



Studio 1, 88 Fern Street | PO Box 111  
Islington NSW 2296  
Phone (02) 4965 3600 Fax (02) 4965 3555  
daniel@moir.com.au  
www.moir.com.au



NOTES:  
1. DO NOT SCALE OFF DRAWINGS. FOLLOW WRITTEN DIMENSIONS.  
IF IN DOUBT OBTAIN WRITTEN ADVICE FROM THE SUPERINTENDENT.  
2. VERIFY ALL DIMENSIONS ON SITE.  
3. TO BE READ IN CONJUNCTION WITH THE SPECIFICATION.  
4. READ IN CONJUNCTION WITH ALL ARCHITECTURAL, CIVIL, STRUCTURAL, HYDRAULIC, MECHANICAL AND ELECTRICAL ENGINEER'S DRAWINGS AND SPECIFICATIONS.  
5. CONFIRM LOCATION OF ALL SERVICES ON SITE PRIOR TO EXCAVATION.

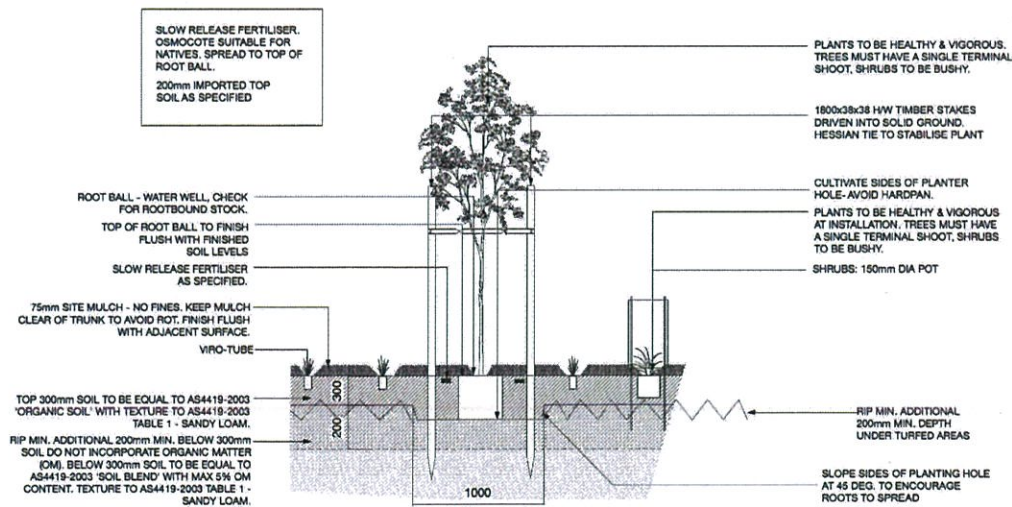
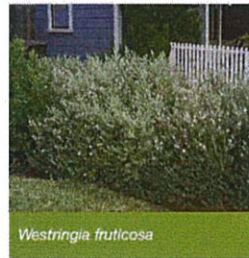
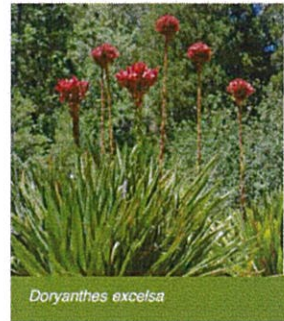
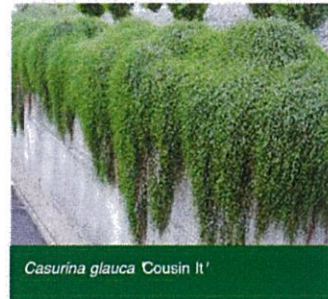
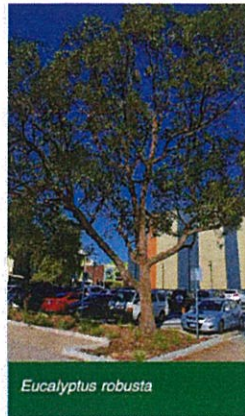
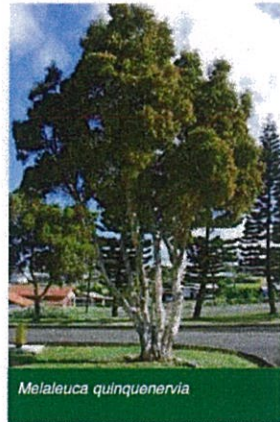
Architect:  
**HEALTH PROJECTS INTERNATIONAL**  
Engineer:  
**Northrop**

No.	Date	REVISION	By
DFT	7/3/17	FOR REVIEW	CN
A	7/3/17	SUBMISSION FOR PRE DA	CN
B	4/4/17	FOR REVIEW	HR
C	10/4/17	FOR SUBMISSION	HR
D	18/7/17	FOR RE-SUBMISSION	HR

North	Status <b>FOR SUBMISSION</b> Tuggerah Lake Private Hospital 645-647 Pacific Highway, Kanwal Health Care Australia
-------	---

LANDSCAPE ELEVATIONS	
SCALE: 1:200 ORIGINAL DRAWING AT A1	Project No. <b>1419</b>
Drawn By: CN Checked By: HR	Drawing No. Rev <b>LP-003 D</b>





1. TYPICAL TREE & MASS PLANTING BED  
1:25 at A1

BOTANICAL NAME	COMMON NAME	POT SIZE	NOTE
<b>TREES</b>			
<i>Cupaniopsis anacardioides</i>	Tuckeroo	75L	Staked
<i>Eucalyptus robusta</i>	Swamp Messmate	75L	Staked
<i>Melaleuca quinquenervia</i>	Broadleaved Paperbark	75L	Staked
<b>SHRUBS/ACCENT PLANTS</b>			
<i>Doryanthes excelsa</i>	Gymea Lily	200mm	As Shown
<i>Syzygium resilience</i>	Lilly Pilly	200mm	1/L
<i>Syzygium cascade</i>	Lilly Pilly	200mm	1/L
<b>TRAILING PLANTS</b>			
<i>Casuarina glauca</i> 'Cousin It'	Cousin It Sheoak	200mm	As Shown
<b>LOW NATIVE GRASSES &amp; SHRUBS</b>			
<i>Poa affinis</i>	Tussock Grass	Tube Stock	4/m2 - 50%
<i>Pennisetum alopecuroides</i>	Nafray	Tube Stock	4/m2 - 50%
<i>Correa alba</i>	White Correa	140mm	1/m2
<i>Westringia fruticosa</i>	Coastal Rosemary	140mm	1/m2
<i>Myoporum parvifolium</i>	Creeping Boobialla	140mm	1/m2
<b>LOW GROUNDCOVERS &amp; GRASSES</b>			
<i>Dianella caerulea</i>	Blue Flax-lily	140mm	4/m2
<i>Correa alba</i>	White Correa	140mm	1/m2
<i>Carpobrotus glaucescens</i>	Pigface	100mm	2/m2

#### PLANT ESTABLISHMENT & MAINTENANCE PERIOD:

The planting establishment period shall be 52 weeks (Street Trees 104 weeks) during which time the landscape contractor shall undertake the following.

#### MAINTENANCE LOGBOOK:

Contractor to keep a maintenance record of works carried out on a monthly basis. Log should include but not limited to:

- Activities carried out during each attendance;
  - Irregularities encountered and actions taken;
- NB: Maintenance payments will be evaluated on submission of monthly logbooks.

#### PLANTING:

Commence recurrent planting maintenance works at the completion of planting. Ensure the stock arriving on site is protected and maintained for healthy growth.

Replacements: Continue to replace failed plants or plants damaged during site works. Report any vandalism or theft immediately.

#### RECURRENT WORK:

Throughout the planting establishment period carry out maintenance work including: watering, weeding, rubbish removal, fertilising, pest and disease control, replanting and, reinstatement of mulch, and keeping the site neat and tidy. Any additional work required should be undertaken and documented in the maintenance log book.

#### MULCHED SURFACES:

Maintain the surface in a clean and tidy condition and reinstate the mulch as necessary.

#### WATERING:

##### LAWN AND PLANTED AREAS:

Generally: Maintain a vigorous healthy appearance.

Application rates: Soak to a depth of 150 mm for lawn and 300 mm for planting. Avoid frequent dampening of the surface. Allow the surface of the soil to partially dry out between waterings. Confirm soaked depth and record in the log book.

Timing: Water at times of day to minimise water evaporation loss. Do not water during the hottest period of Summer days.

Public areas without installed watering systems: Water only in excessive dry periods. Make available all necessary equipment to carry out hand and sprinkler watering as required.

Water restrictions: Coordinate the water supply and confirm the watering regime against federal and state government legislation and restrictions at the time.

#### HAND WATERING:

General: Manually water all lawn and planting areas in the absence of an irrigation system or until the proposed irrigation system is fully operational.

#### TEMPORARY IRRIGATION SYSTEM:

The contractor shall design, supply, lay and maintain the system for the supply of water to the whole of the landscape works.

#### TAPS:

Refer to engineers plan.

#### IRRIGATION SYSTEM:

A temporary irrigation system is to be installed for all mass planted beds, new turfed areas, and new tree planting. This system shall be installed and maintained for the duration of the maintenance period (26 weeks) & (52 weeks for Street Trees).

All irrigation works shall be performed by a licensed irrigation contractor. Materials to be used are to be submitted to the site superintendent for approval. The contractor shall provide design drawings and material specifications/samples prior to commencing work. All works are to be conducted to all current and relevant Australian Standards.

The contractor is to be completely responsible for the coordination of the installation of the irrigation system with other services throughout the site.

Recommended flow rates: The system shall be set up on a trial basis and then adjusted to suit the local requirements and conditions. Once the system is satisfactorily adjusted the contractor shall make fortnightly visits within the establishment period to ensure satisfactory performance of the system and to adjust the watering periods as required. A minimum even coverage of 25mm of water per week is recommended.

NB: A temporary system may be as simple as the contractor hand watering with garden hoses if the desired flow rates can be achieved. If this is the preferred approach the contractor should inform the site superintendent.



Studio 1, 88 Firm Street | PO Box 111  
Islington NSW 2226  
Phone (02) 4966 3600 Fax (02) 4966 3500  
admin@moir.com.au  
www.moir.com.au



#### NOTES:

1. DO NOT SCALE OFF DRAWINGS. FOLLOW WRITTEN DIMENSIONS. IF IN DOUBT OBTAIN WRITTEN ADVICE FROM THE SUPERINTENDENT.
2. VERIFY ALL DIMENSIONS ON SITE.
3. TO BE READ IN CONJUNCTION WITH THE SPECIFICATION.
4. READ IN CONJUNCTION WITH ALL ARCHITECTURAL, CIVIL, STRUCTURAL, HYDRAULIC, MECHANICAL AND ELECTRICAL ENGINEER'S DRAWINGS AND SPECIFICATIONS.
5. CONFIRM LOCATION OF ALL SERVICES ON SITE PRIOR TO EXCAVATION.

#### Architect:

HEALTH PROJECT INTERNATIONAL

#### Engineer:

No.	Date	REVISION	By
A	10/4/17	FOR SUBMISSION	CN

North

Status	FOR SUBMISSION
Project No.	1419
Drawing No.	Rev
LP-004 A	

PLANTING DETAIL AND SCHEDULE
SCALE: NTS
ORIGINAL DRAWING AT A1.
Drawn By: CN
Checked By: HR